

**CASE**  
CONSTRUCTION

**CASE 752**  
VIBRATORY TANDEM COMPACTOR



*We make machines that build the nation*

# FEATU



*Well located working lights with blinkers*



*Heavy duty articulation joint*



*Engonomically designed sl*



*Excellent front visibility*

*Excellent rear visibility*



*Good accessibility for servicing*

*Easily accessible MCB's*



# URES



*Guiding operator's seat*



*Conveniently located centralized lever controls*



*Rear view mirror for added safety*



*Good gradeability for versatile application*



## APPLICATION GUIDELINES - INDICATIVE DATA

### a) Soil Compaction

| Material                | Sand & Gravel | Mixed Soil | Clayey Soil |
|-------------------------|---------------|------------|-------------|
| Layer thickness in mtr. | 0.40          | 0.30       | 0.20        |

### b) Asphalt Compaction

| Application                      | Wear Course | Binder Course | Base Course |
|----------------------------------|-------------|---------------|-------------|
| Layer thickness                  | 2-4 cm      | 6-8 cm        | 10-14 cm    |
| Area output M <sup>2</sup> /Hour | 1000-1600   | 600-900       | 500-700     |
| Tonnes                           | 40-100      | 80-160        | 135-200     |

*Protective cabin for use in cold climate*



*Turbo pre cleaner (optional)*



*User friendly control panel*



*Improved, electronically controlled water sprinkler*

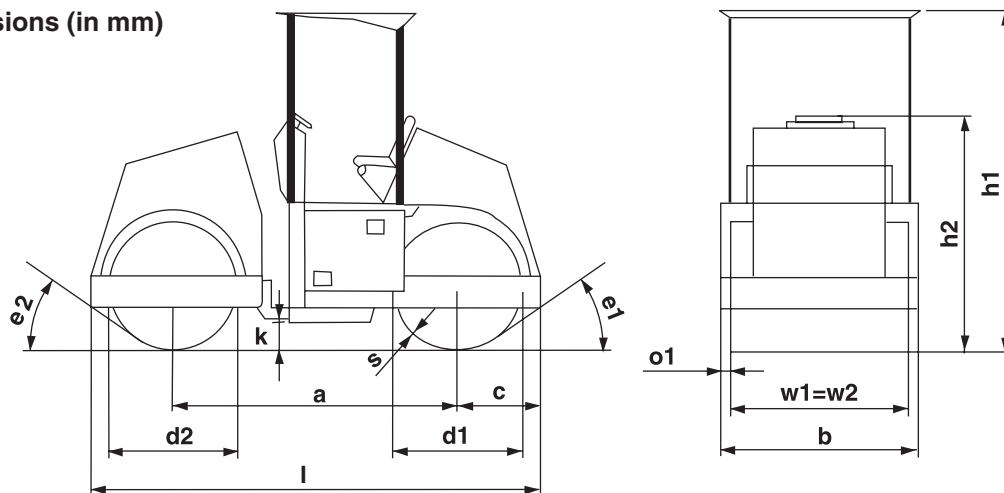


*New sprinkler nozzles with built-in filter*



# CASE 752 VIBRATORY TANDEM COMPACTOR SPECIFICATION SHEET

## Machine Dimensions (in mm)



| a    | b    | c   | d1=d2 | h1   | h2   | k   | l    | o1  | s  | w1=w2 | e1=e2 |
|------|------|-----|-------|------|------|-----|------|-----|----|-------|-------|
| 2690 | 1905 | 770 | 1210  | 3030 | 2210 | 245 | 4230 | 113 | 17 | 1675  | 40°   |

## TECHNICAL DATA

| ENGINE                            |   | SPEED                                |  |
|-----------------------------------|---|--------------------------------------|--|
| Make                              | KOEL  | Working speed                        | 0-6.5 Kmph   |
| Model                             | HA 494T BS-III  | Working and transport speed          | 0-13.0 Kmph  |
| Type                              | 4-Cylinder, inline, 4 stroke, Turbo charged, air cooled | <b>BRAKE</b>                         |  |
| Power                             | 74 HP @ 2500 RPM BS III                                 | Service brake                        | Hydrostatic  |
| Total displacement                | 3770 cc   | Parking brake                        | Hydraulic  |
| Bore x Stroke                     | 100mm x 120mm   | <b>WATER SPRINKLER TANK CAPACITY</b> |  |
| Starting Method                   | 12 V, Electrical system.                                | Front                                | 400 L  |
| Propulsion on Front and Rear drum | Hydrostatic drive.                                      | Rear                                 | 400 L  |
| <b>OPERATION DATA</b>             |   | <b>HYDRAULIC OIL FILTER</b>          |  |
| Maximum Operating weight          | 10400 Kg  | Type                                 | Micro Glass element.   |
| Operating Weight                  | 8800 Kg   | Filtering quality                    | 10 microns   |
| Axle load front                   | 4250 Kg   | Indicators                           | Indicators for Battery non Charging, engine low lube oil pressure, hydraulic oil filter clog, parking brake, turn and hazard, fan belt failure & high speed  |
| Axle load rear                    | 4550 Kg   | Gauges                               | Digital Hourmeter, engine lub oil pressure gauge, engine lub oil temp gauge.   |
| Static Linear load front          | 25.4 Kg/cm  | Safety Feature                       | Automatic vibration control, MCB protection, Automatically applied parking brake in case of engine shutdown & No vibration in Neutral.   |
| Static Linear load rear           | 27.2 Kg/cm  | Standard Equipment                   | Horn, dual drum vibration, vibration control on front/rear/both drums, 2 frequency/2 amplitude, pressurized water sprinkler system, wear resistant scrapper, sun roof, canopy, night working lights. |
| Gradeability                      | 36% (20°)   | Hydraulic Oil tank capacity          | 120 L  |
| Articulation to either side       | 25°   | Diesel tank capacity                 | 240 L  |
| Inside turning radius             | 5.8 m   |                                      |  |
| Oscillation Angle                 | 10°   |                                      |  |
| Nominal amplitude(Stage 1)        | 1 mm  |                                      |  |
| Nominal amplitude(Stage 2)        | 0.4 mm  |                                      |  |
| Frequency (stage 1)               | 33.3 Hz   |                                      |  |
| Frequency (stage 2)               | 50 Hz   |                                      |  |

ALL PARAMETERS ARE WITHIN ±2.5% OF THE SPECIFIED VALUES.

For further information, contact:



**CASE NEW HOLLAND CONSTRUCTION EQUIPMENT (INDIA) PRIVATE LIMITED**

First Floor, North Block-II, Gate No.1, Saki - Vihar Road,  
L&T Campus, Powai West, Mumbai - 400 072, India  
Phone : +91 - 22 - 6705 1279 / 1471, Fax: +91 - 22 - 6705 1829  
Email : CASEIndia@cnh.com, www.casece.com

Authorised Dealer

Specification subject to change without notice due to product upgradation